

## The "Keep 'em Peeled" Code



Find a safe place to cross, then stop. Make sure you can see traffic in all directions!



Stand on the pavement near the kerb.



Look and listen for oncoming traffic.



Don't hurry. If traffic is coming, let it pass. Only cross when there is a gap in the traffic.



When there is no traffic near, walk straight across the road. Don't run.



Keep looking and listening for traffic while you cross. Walk straight across the road.



 @wmerciapolice

 west mercia police

[www.westmercia.police.uk](http://www.westmercia.police.uk)

POLICE NON-EMERGENCY

 **101** IN AN EMERGENCY ALWAYS CALL 999

## Road safety for schools



## Advice for parents and pupils

# Walking to school



## Peeler's Tips

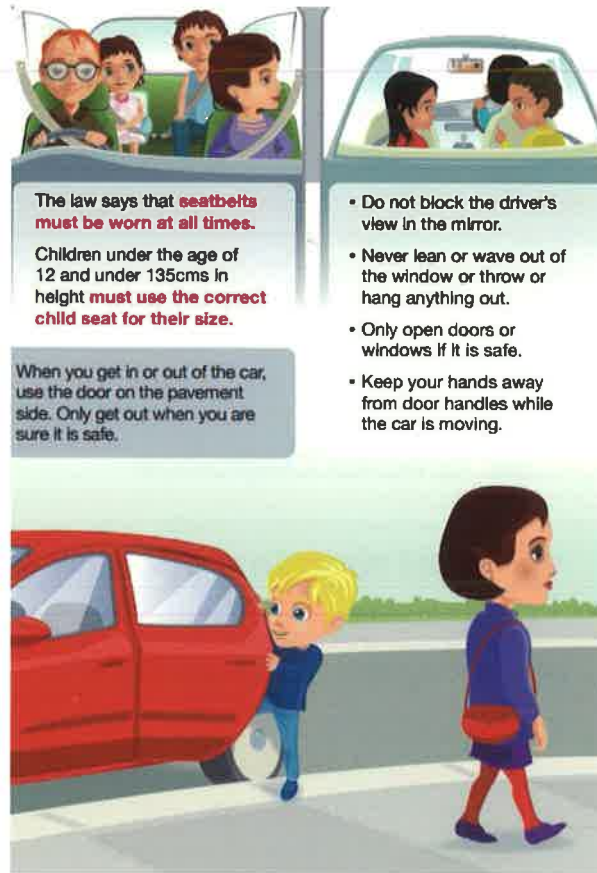
- Where there is a pavement or foot way, use it!
- If you are looking after someone younger than you, hold their hand when you cross the road.
- Wear bright fluorescent clothes on darker days and at night!
- When there is no pavement, walk on the right hand side of the road to face traffic coming towards you.

## Crossing

Follow the "Keep 'Em Peeled" code and always use a Zebra or Pelican crossing if one is available.

If your school has a crossing patrol wait until they signal to you to cross the road. Always cross in front of them.

# Getting a Lift



The law says that **seatbelts must be worn at all times.**

Children under the age of 12 and under 135cms in height **must use the correct child seat for their size.**

When you get in or out of the car, use the door on the pavement side. Only get out when you are sure it is safe.

- Do not block the driver's view in the mirror.
- Never lean or wave out of the window or throw or hang anything out.
- Only open doors or windows if it is safe.
- Keep your hands away from door handles while the car is moving.



**KEEP 'EM PEELED with PEELER the POLICE DOG!**

# Parents

If you need to drive your child to school, for the safety of your child, their friends and the local community we request that you park safely, legally and considerately.

- 'School Keep Clear' restrictions ensure clear sight lines for motorists & children. No vehicle, even blue badge holders, are permitted to stop.
- You should not park on the pavement or grass verge. Obstructing the verge or footway can amount to a criminal offence if the passage of pedestrians is significantly impeded.
- Consider parking further away from the school & walking the last 5 or 10 minutes. Walking to school is good for your health, means less congestion outside schools, improving air quality and safety around your school!

